

Raymond Black



Moises Delgado

National Campaign for the Arts launches new website

www.artscampaign.org.uk

Over the Christmas break, the National Campaign for the Arts (NCA) has been busily preparing for the launch of its new, improved home on the web. Over the last year it has been asking members what it is they want from the NCA website and has been working hard to put together a new site that will meet those needs.

The new site is now live and the NCA would like you feedback. Please send any comments about the new site to:- www.artscampaign.org.uk

The NCA hopes you will find the new site more intuitive and the information it contains much easier to access. www.artscampaign.org.uk

MIND's campaign for safeguarding vulnerable adults

Mind's campaign to improve access to justice for people with mental health problems has taken a major step forward.

In a statement in the House of Commons, Phil Hope, Minister for Care Services, announced measures to prevent abuse of adults and to bring abusers to justice.

local safeguarding boards that bring together health, care, housing and criminal justice agencies to share information would be made a legal requirement in every area of the country;

A group of five Ministers would meet regularly to set and coordinate policy on

safeguarding issues at the highest level;

The Government agreed to review safeguards for vulnerable adults after Mind raised serious concerns that the system did not work for people with mental health problems.

www.mind.org.uk/campaigns_and_issues/current_campaigns/another_assault/

The Other Side Gallery Website launch / Auction 4th March

The Other Side Gallery is launching its new website and will do so alongside an auction to raise funds. We are asking artists' members, to donate a piece of work for the auction.

The funds raised at the event will go towards running costs and future exhibitions. Anita will try

and get in touch with you, however if you already have a piece that you want to donate, please send me an email:

admin@theothersidegallery.org

or phone on: **07981453293** and Anita will arrange for it to be picked up.

Venue: Candid Arts, 3 Torrens St. London EC1V 1NQ

**Date: 4th March 2010
 Time: 6:00 - 8:30**

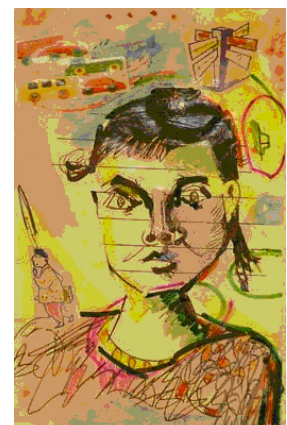
You will receive an invite closer to the date.

I am looking forward hearing from you.

Best wishes

Inside this issue:

National Campaign for the Arts New Website	1
MIND's campaign for safeguarding	1
The Other Side Gallery Website launch / Auction	1
World Community Arts Day project	2
Over 60's urged to	2
Santander Foundation	3
Wellcome Collection's 1st theatrical production, "Pressure Drop"	3
Emergence... Discovering the creative self"	4/5
Current Exhibitions	5



George Carlton

WORLD COMMUNITY ARTS DAY 17th Feb 2010

WORLD COMMUNITY ARTS DAY 17th Feb 2010

"ART AS A CATALYST FOR CARING AND SHARING"

Be creative on the day to raise an important issue you believe in and help create a World Festival Society for a day.

All we ask of you on that day is to do an arts project, however small or big on the 17th Feb 2010 or as near to the date as possible.

Be creative about an issue that you believe promotes:-
"caring and sharing".



Song, dance, theatre, draw, paint, write, make, poem, photograph, lecture, walk, tour, talk, art class anyway that you feel you are creative!

It maybe an ongoing project you wish to highlight.

It is being creative that is important.

It could be a small or large gathering. Or add an image or sound, etc to an existing website to mark this day.

If you can mark the event on your website in the build up to it that would be great too.

We are not asking for money, but your creativity and artistic skills to celebrate this day. The aim is to create a world festival society for a day. To illustrate how festival and celebration through art can provide answers.



OUR BIGGEST FESTIVAL

This is the fourth year and each year it grows. It started off in 2007 to celebrate the life of [Reg Bolton](#) the [Craigmillar Festival Network](#), but has

now grown each year.

This will be our biggest yet with hundreds of thousands of people joining in and bringing many projects from many countries.

Many are adding artwork, music, photos, etc online into a range of social networks.

Look and enjoy the diverse range of creativity.

Have a look at last year, live broadcasts, radio broadcasts, concerts, art installations, everything and anything. Some celebrations lasted a few months, week long celebrations in many Arts Centres and many were very quiet and quick on or before the day. The important thing is to be part of this global celebration.

TO BE INCLUDED IN THE FESTIVAL

To be included in the festival all we ask for you to:

Have the words "World Community Arts Day " with the Green Circle Logo on your website

Contact us and we will create a special page, but prefer if it is on another/your own website.

www.communiversity.org.uk/worldcommunityartsday.htm

Over 60's urged to get Creative

Booktrust believes that you're never too old to get creative. It has just launched a new project, which aims to encourage the over 60s to engage in reading and creative writing. Named Bookbite, it will see pensioners experience the positive affects that creative writing can offer for emotional health and wellbeing.

It is also hoped that older people, who rarely or never read books

to engage more in reading and writing for pleasure, will start using the internet to access additional resources where and when possible.

Well-known authors, poets and well known faces including Andrew Motion, Pam Ayres, Val McDermid, Sherrie Hewson and Mihir Bose have all contributed stories, poems and support to the project.

Whatever your age, attending a

creative writing course can be a fantastic way to meet new people and develop vital skills. Whether its poetry, novels or prose you're into, get those creative juices flowing today!

www.booktrust.org.uk

Santander Foundation

The Abbey Charitable Trust has now changed its name to the **Santander Foundation** and has announced some changes on its new website. The Santander Foundation will support disadvantaged people, focusing on the priorities of education and training and financial capability.

Grants of up to £10,000 can be awarded anywhere in the UK.

However there are certain areas where Santander has a significant presence and Community Partnership Groups have been established and higher grants can be made. There are nine such areas across the UK, including Sheffield, which covers South Yorkshire, which grants of up to £30,000 are available. The Foundation is also now able to support revenue or capital items, such as

salaries and project costs or equipment.

There are no deadlines or application form, however there is now a cover sheet that you can use as a checklist to make sure that you covered all the information required in your letter of application. For more information visit www.santanderfoundation.org.uk.

Wellcome Collection's 1st theatrical production, "Pressure Drop"



Image credit: Adrian Brooks

Wellcome Collection is thrilled to announce the presentation of its first major performance arts production. 'Pressure Drop', starring the legendary singer-songwriter Billy Bragg and his band, is the latest play from On Theatre and will be taking place in Wellcome Collection's largest gallery space.

This passionate drama from acclaimed writer and theatre director Mick Gordon, with new music and songs written by Billy Bragg, is directed by Christopher Haydon with a limited run, 19 April-12 May, 19.30 (excluding Sundays).

As part of the Wellcome Trust's Identity Project, an ambitious season of activities focused on the endlessly fascinating topic of human identity, '[Pressure Drop](#)' at Wellcome Collection asks a central question: what makes me who I

am? It explores the individual, familial, social and political reference points that make a person definable and recognisable to themselves and others.

Part play, part gig, part art Installation, 'Pressure Drop' prompts the audience to consider which are the pressured groups in society today - an increasingly topical issue as the general election approaches.

It presents three generations of a white, working-class English family struggling to define themselves both in relation to one another and within a changing social landscape. At the heart of the event lies a paradox. Our identities are continually in flux; but at the same time, we need a firm sense of rootedness, of belonging to something stable.

Billy Bragg said: "I have never done anything like this before; mixing songs with theatre is a totally new experience for me."

He continues, "Given that music makes a significant contribution to many people's sense of who they are, I am very excited to be working with On Theatre and Wellcome Collection as part of The Identity Project."

'Pressure Drop'

at Wellcome Collection

19 April-12 May, 19.30pm

(excluding Sundays)

Press night: 22 April 2010

£20/£15 concession

Tickets now on sale via the box office: 0844 412 4318 or [online](#).

NB 'Pressure Drop' is a promenade production with a duration of 90 minutes. Seating is not provided. Spaces for wheelchair users are available by arrangement. Post-show discussions will be held on Thursday 29 April and Thursday 6 May (free to same day ticket holders).

Written by Mick Gordon

Music and songs by Billy Bragg

Produced by On Theatre and Wellcome Collection

Directed by Christopher Haydon

Designed by Tom Scutt

Lighting design by Mark Howland

Sound design by Mike Furness

Contact:

Rachel Duffield, Colman Getty

T:020 7631 2666

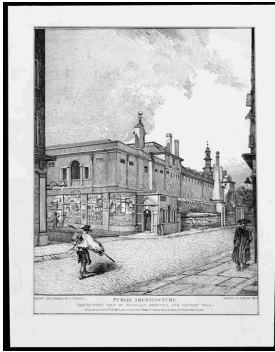
E Rachel@colmangetty.co.uk

Kat Nevin-Ridley

Wellcome Collection

T 020 7611 8540

Current Exhibitions



Lost London: Forgotten places, forgotten people, Until 12th February

An exhibition from the Bethlem Museum's Reserve Collection presenting engravings of historical institutions, asylums, and almshouses.

Email: thebethlemgallery@gmail.com

Website:
www.bethlemgallery.com



Exiles from Austria

Promised Lands: Freud's Exiles is a historical exhibition exploring the cultural background and historical forces that determined the fate of Sigmund Freud and his family. Picture: Josephine Stross, by Peter Rauter. Freud Museum:- 13th Jan - 21st February 2010

Website:
www.freud.org.uk

the Other Side gallery

Contemporary Outsider Art

Anita Jensen, Project Manager,
The Other Side Gallery
c/o The Resource Centre,
76-80 Isledon Road, London N7 7LB

Tel: 07981453293

admin@theothersidegallery.org

www.theothersidegallery.org



Sara Rivers

Emergence...

"Discovering the creative self"

25th January - 4th March 2010
Our Space Gallery, Together, 12 Old Street, London EC1V 9BE

our space gallery

An inspirational multi disciplinary exhibition of artwork by London artists who identify with the symptoms and issues surrounding Personality Disorder. Visual art, film, sculpture, debates, workshops, talks and performances throughout this 5-week show.

The exhibition is open from
Monday - Friday, 9am - 5pm.

Contact us or see our website for details of days and times of the associated events.

Devised and curated by

personality plus

www.personalityplus.org.uk

For further information please contact us at: pplus@hotmail.co.uk or call us on 07549 882992

Personality Plus is now part of an organisation called Emergence. For details please visit: www.emergenceplus.org.uk

together
FOR MENTAL WELLBEING

www.together-uk.org
Registered charity no 211091

Emergence... Discovering the creative self"

25th January- 4th March 2010
Together Gallery,
12 Old Street, London EC1.

Personality Plus is pleased to present an inspirational multidisciplinary exhibition of artwork by London artists who identify with the symptoms and issues surrounding personality disorder.

The show will include an exciting body of work including visual art, film, sculpture and interactive art that spans the 2 floors of the gallery. We have incorporated an element of participation and playful interaction as well as an educational programme of workshops, talks and performances (see below).

The Gallery is open between 9am and 5pm, Monday to Friday for the duration of the exhibition Entrance is free.

Education Programme

Please contact us at pplus@hotmail.co.uk or on telephone 07549 882992 to book for the following free events.

Artist's.....Talk

Monday 8th February 1:30-3:00pm (Light lunch provided from 12:30- 1:30)An artist showing work will discuss their relationship with art, life and PD. There will be a plenary question and answer session with a selection of artists from the show.

This talk forms part of a series of talks run at Tate Modern London and Carriage Works Leeds.

Attachment and the Arts

Thursday 11th February 5:30-8:30pm (light refreshments will be served)

An evening pre-event to launch the Conference - "Attachment and the Arts" partnered with the

British Association of Art Therapists (BAAT) on 12th February (see <http://www.baat.org/attachment.html> for conference details).

This pre-event is an opportunity to view the exhibition at Together Gallery, and hear about innovative qualitative projects in arts and PD. It includes an opportunity to listen to frank audio pod cast discussions made in arts based focus groups at Tate Modern, Carriage Works Leeds, and other locations around the UK. Neil Springham (Chair of BAAT) and Kath Lovell (Emergence National Director) will debate the difference between peer-led and non peer-led interviewing.

The Story so Far.....

Redcape Theatre Date TBC (late February, early March)

An inspiring and moving theatre piece exploring stories collected from people identifying with the symptoms of personality disorder. This is the second part of a work originally commissioned for a Tate Modern event in 2007.

Arts Social Network, this event will be run at the Story So Far Theatre Performance evening, date tbc

The Arts and Social Network is a new opportunity for people who identify with the diagnosis of personality disorder their carers, and friends to enjoy London based arts and cultural events on a regular basis. The network supports and promotes users to meet together in a safe way.

Events so far include:

Tate Modern Art into Life, Bobby Baker at Wellcome Trust Gallery.

This event will enable people to watch The Story So Far performance, and view the Emergence exhibition, with time for light

refreshments and a chat afterwards.

For further information about this event please look at our website or contact the ASN administrator on asnplus@hotmail.com or telephone 07549 878510

Notions of Recovery

Monday 22nd February 2:30-4:00pm (Light lunch provided from 1:30- 2:30)What does "Recovery" mean in the context of personality disorder? How can we get the things we want out of life when we still struggle with the complexity of our condition and the wider issues that surround it? How can we discover our capacity for personal growth, realize our true potential? And uncover unique talents and abilities? This unique presentation and debate will focus on the role creativity can play in a collective experience of belonging to self and others.

Andy Brooker (Emergence Director and artist) will co-present this event with Pam Mellier (Art therapist).

Career development attendance certificates are available for this event.

Further information and bookings at www.personalityplus.org.uk, pplus@hotmail.co.uk, 07549 882992

Personality Plus is now part of an organization called Emergence www.emergenceplus.org.uk

our
space
gallery
presents...



'Emergence'